

Volker Rachold



PhD
Geochemistry
Göttingen 1994

*Orbital Cycles in
Cretaceous Sediments*



Habilitation
Geochemistry
Potsdam 2002

*Land-Ocean-Interactions
in the Russian Arctic*

Executive Secretary of IASC
Stockholm/Potsdam 2006 – 2016



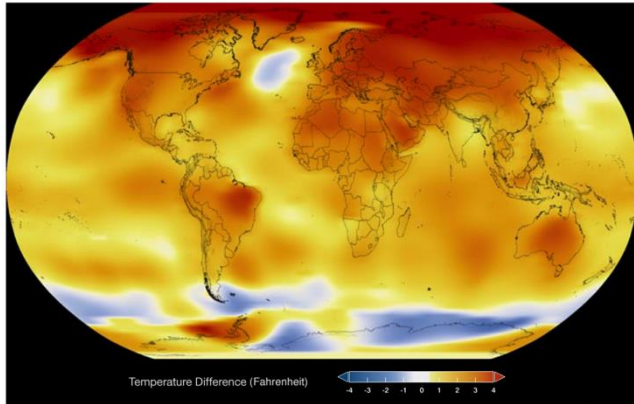
Head of the German Arctic Office
Potsdam 2017-

- *serves as an information and cooperation platform for German stakeholders invested in Arctic science, politics and industry*

GERMAN
ARCTIC OFFICE

How is Germany's society affected by Arctic change – now or potentially in future?

Risks



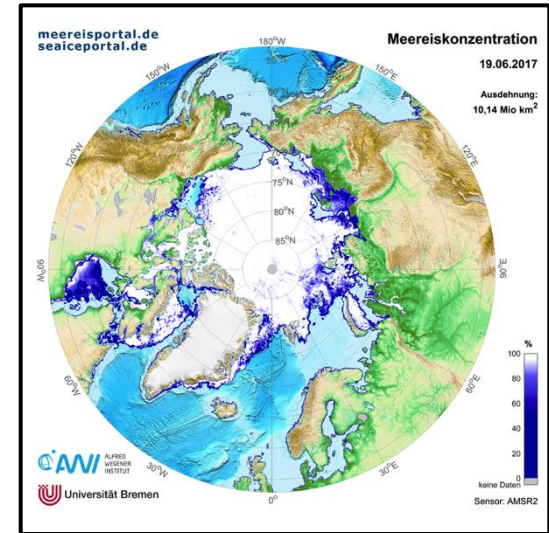
► 1884 ◄ 2016

This color-coded map shows a progression of changing global surface temperatures since 1884. Dark blue indicates areas cooler than average. Dark red indicates areas warmer than average.

Data source: NASA/GISS
Credit: NASA Scientific Visualization Studio

- Loss of sea ice – climate effects on Europe
- Permafrost thaw – possible GHG emission
- Loss of ice mass – sea-level rise

Opportunities



- Loss of sea ice/ permafrost thaw – technology and innovations
 - Loss of sea ice - shipping
 - Loss of sea ice - tourism

How does Germany address the effects of Arctic change?

